

Palanga Amber Museum

Palanga Amber Museum – is a branch of the Lithuanian Art Museum, exhibiting amber, its pieces and providing information about them. The museum was established on 1963, in the former palace of the Count Feliksas Tiškevičius, located in the centre of the park. The palace was built in 1897, according to the project of German architect Franz Schwechten. The Neo-Renaissance style palace is an integral part of the park's ensemble.

In 2013-2015, one of the most popular museums in Lithuania, which was established more than 50 years ago, was renewed and adapted to the contemporary cultural tourism.

The public exposition of the museum takes up 15 rooms with exhibits. The exposition provides detailed information about the formation of amber, its practical application and morphology (external and internal structure). Visitors are able to see the examples of fossil resins, found in various parts of the world, as well as the unique collection of inclusions. What is more, the visitors can learn more about the amber pieces of the 19-20th centuries as well as Lithuanian amber processing workshops and masters, which were well-known during the interwar period.

Areas located on the ground floor of the palace charm visitors with updated historical interiors portraying the life of the counts in this palace. Visitors interested in Palanga and the history of Tiškevičiai family may visit and admire authentic spaces: Hall, Events Hall, Red Salon, Grand Salon, Countess Parlour, Blue Salon, Parlour of the Young Count, Small Salon. Surroundings of the residence of aristocrats are recreated in these representative halls of the palace where art pieces from the end of the 18th century and the beginning of the 19th century from the interiors of manors of the nobility from the collections of Counts Tiškevičiai, other Lithuanian noblemen as well as private collections preserved by Lithuanian Art Museum are displayed.

Unique amber display enriched with archaeological exhibits and renewed inclusion collection is presented on the first floor. Visitors can look at the brand new amber morphology exhibition. The Museum contains the reconstructions of the lost Stone Age amber pieces restored according to the drawings.



Palanga Amber Museum



Contacts: Vytauto str. 17, Palanga, Lietuva
Tel.: +370-460 53 501, +370-460 30 314, +370-460 51 319
E-mail: gintaro_muziejus@dm.lt
hours: www.pgm.lt/Gintaro_muziejus/turiny.htm

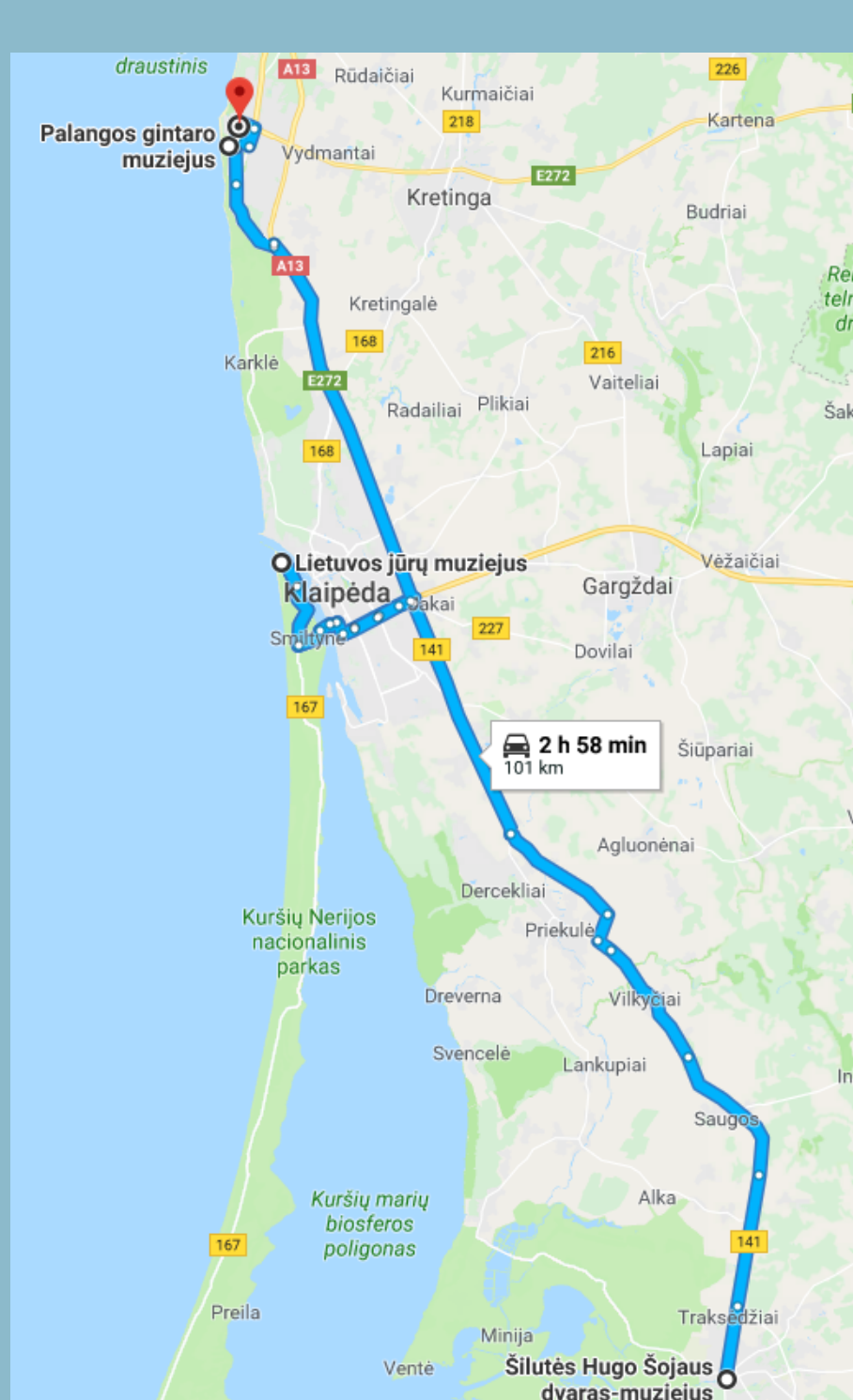
Opening:
September to May:
Tuesday to Saturday 11.00–17.00.
Sunday – 11.00–16.00.

June to August:
Tuesday to Saturday 10.00–20.00.
Sunday – 11.00–19.00.
National Holiday Eve – opening hours are shortened for one hour.

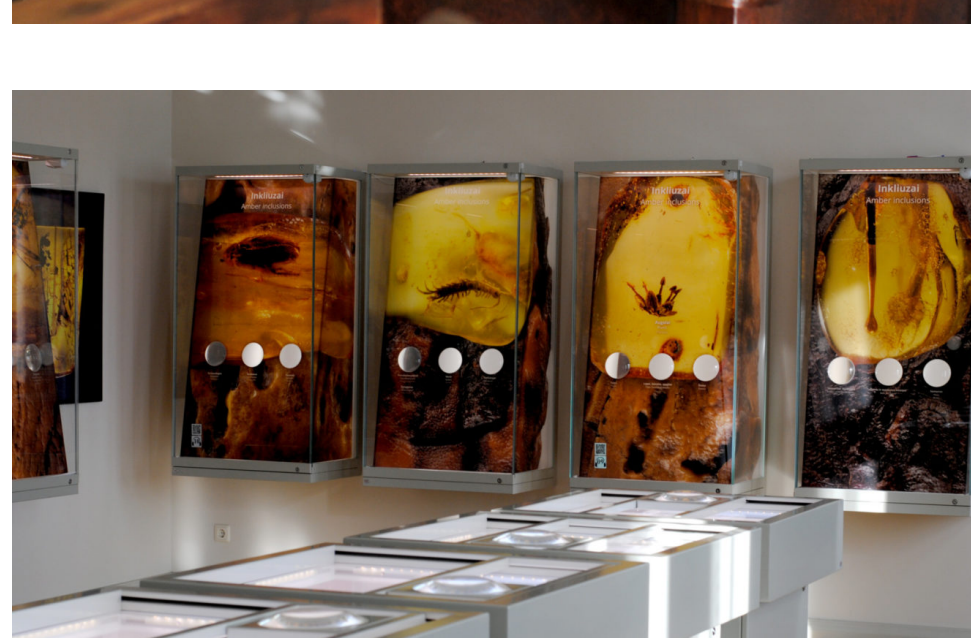
GPS: 55.906887, 21.056049

Seaside Route

1. Šilutė Hugo Scheu Museum.
2. Lithuanian Sea Museum.
3. **Palanga Amber Museum.**
4. Palanga Kurhaus (hall).



It is one of the 4 objects presented on the route of Seaside region, adapted for people with disabilities and for those who are interested in more convenient accessibility.



Museum containing one of the most abundant collections of amber inclusions and pieces in the world has about thirty thousand exhibits in total.

While visiting the permanent exhibition, people can use the museum's tablet computers free of charge. Tablet computers have an installed audio guide in Lithuanian, English, German, French, Polish and Russian as well as a video guide in the Lithuanian sign language.

Various concerts and other cultural events are organized in the museum's building.

[Would like to know more](#)

The object is accessible to people with disabilities

Parking lot is suitable for people with disabilities, near the object.

Access to the object is a elevator.

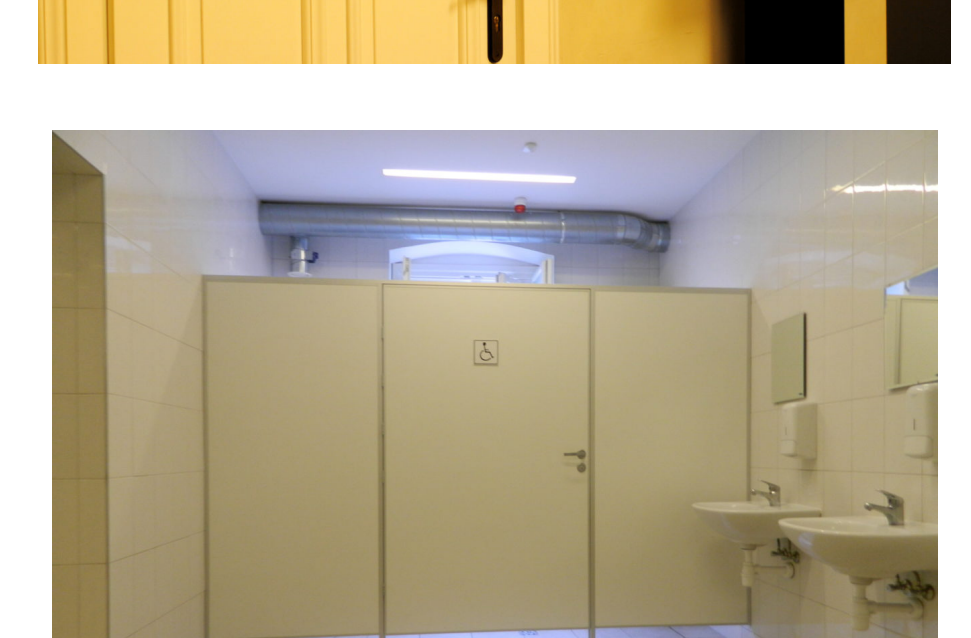
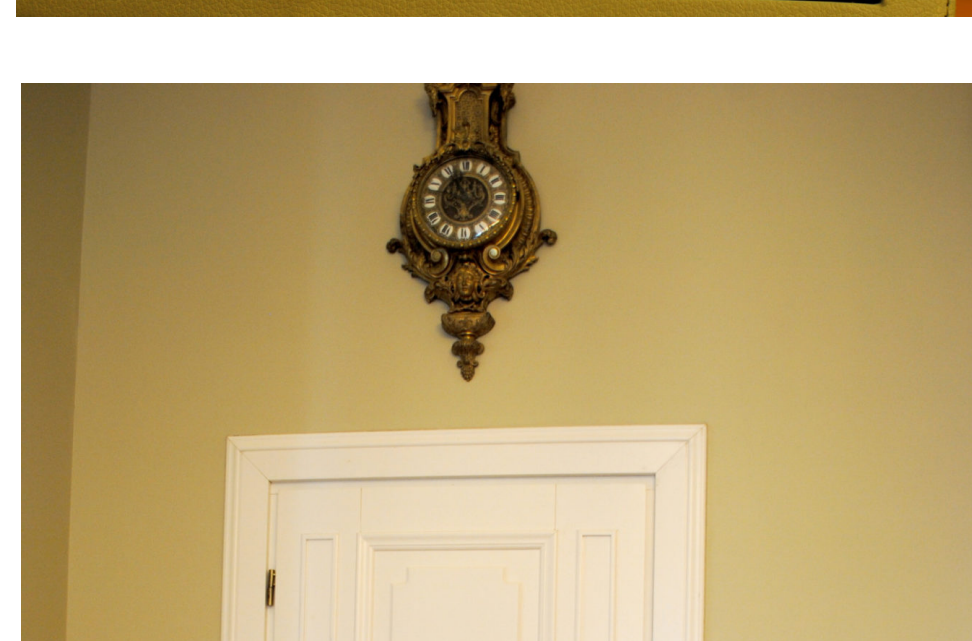
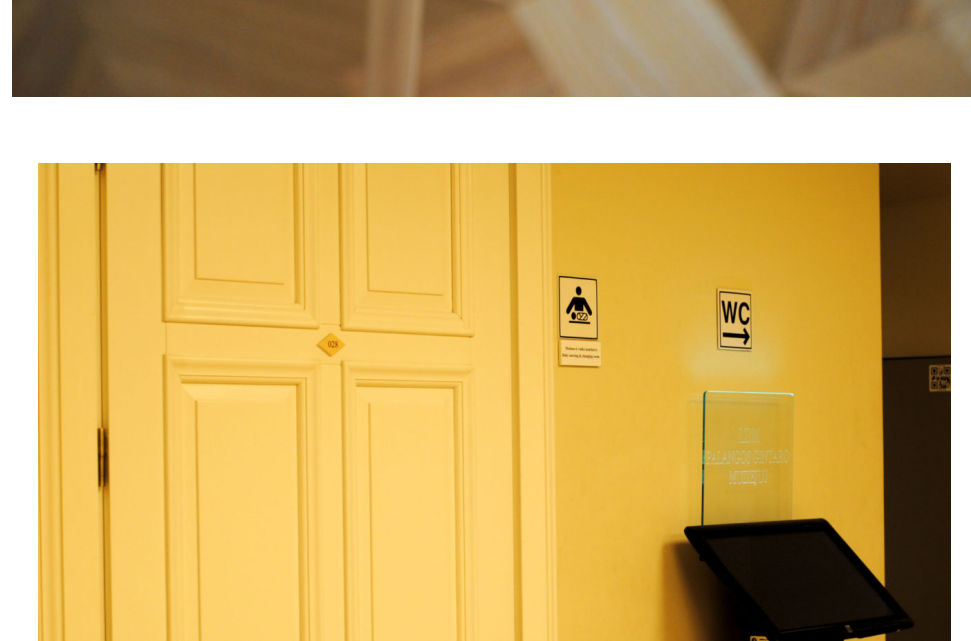
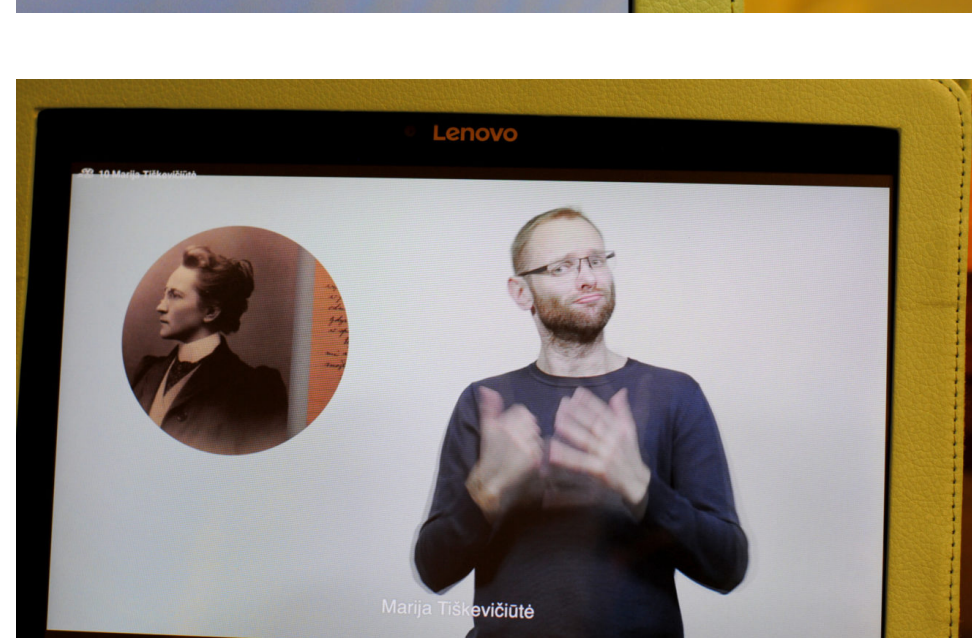
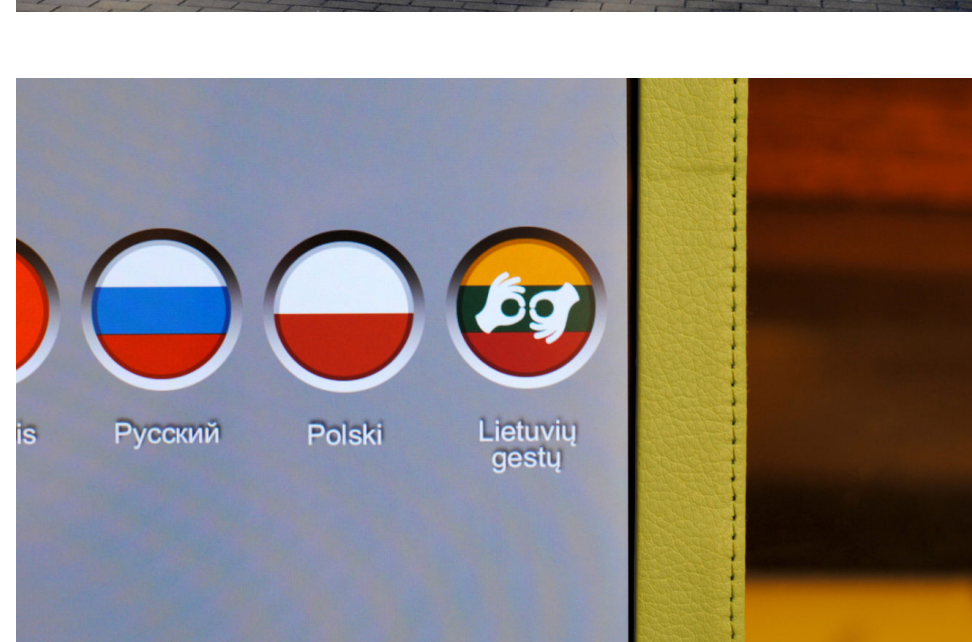
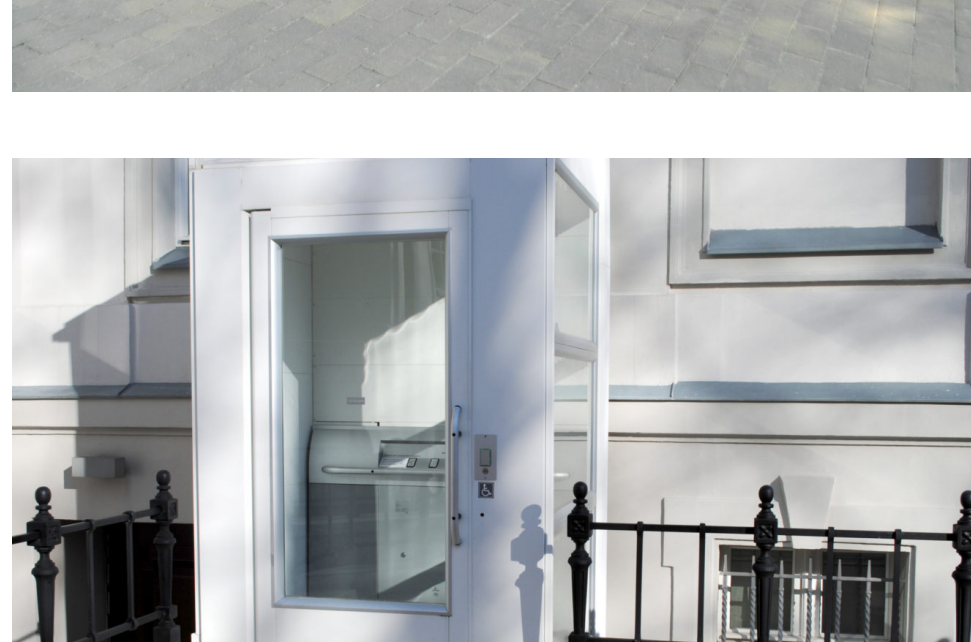
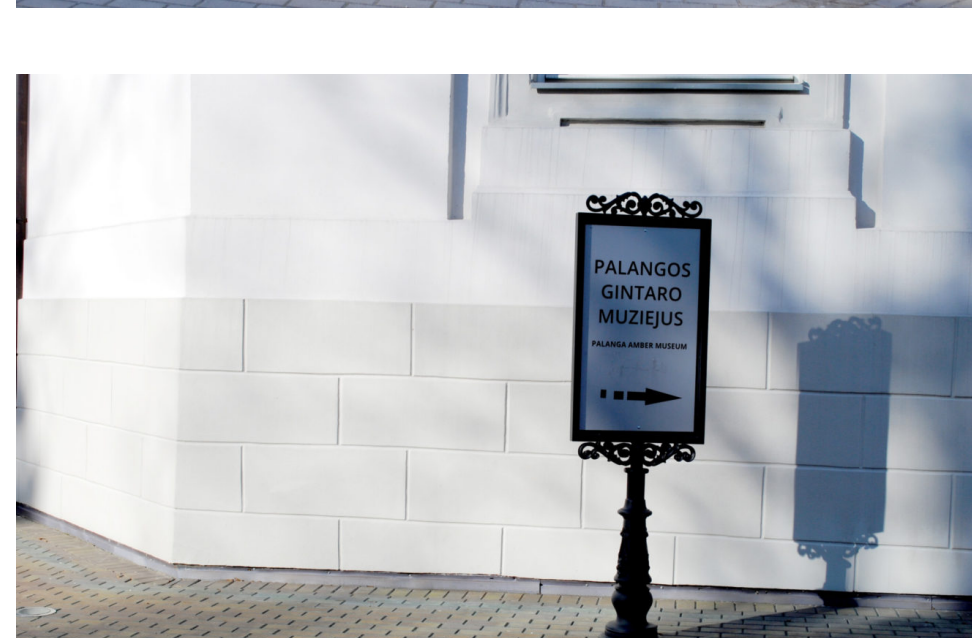
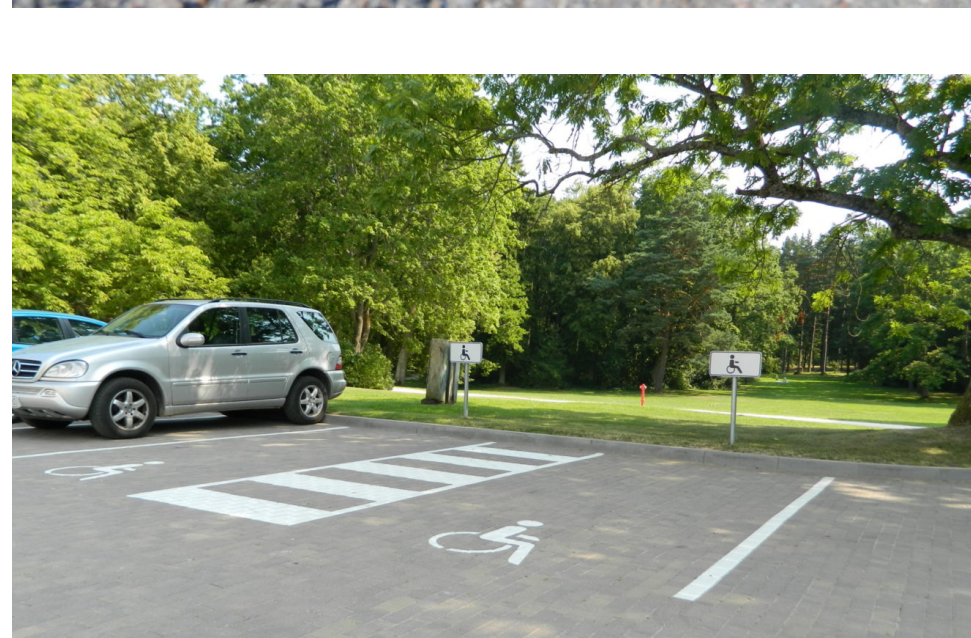
It's easy to move inside the object, there are no obstacles.

The facility has an elevator.

The Museum has an audio guide system (LT, EN, DE, FR, RU, PL) and video guide system in sign language for people with hearing disabilities.

The object has for the toilet for the disabled.

Other facilities: baby nursing & changing room.



[Would like to know more](#)

For more places adapted for people with disabilities visiting can be found at:
www.beslenksciu.lt/turizmas-visitams/

Keep up with all the news!

